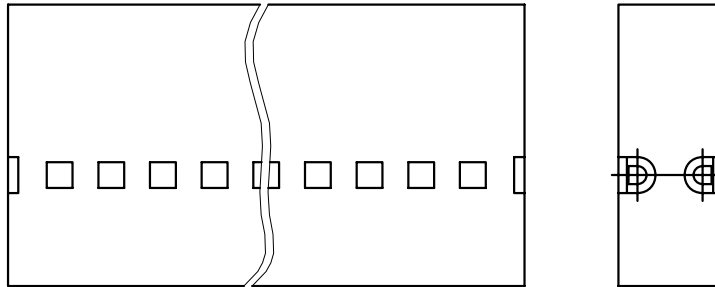


PRODUCT NUMBER

SEE TABLE

.545  
13.84



NOTES:

- ①. MOLDING MATERIAL: MODIFIED POLYPHENYLENE ETHER, FLAME RETARDANT PER UL-94V-0, COLOR: BLACK.
2. PIN LENGTH TO BE .210/5.33 MIN  
RECOMMENDED PIN LENGTH IS .225±.015/5.72±.38.
3. QUANTITY OF RETENTION RODS IS TWO(2) PER HOUSING.
- ④. RETENTION ROD MATERIAL: NYLON, .030/.76 DIAMETER.
5. PRODUCT SPECIFICATION: BUS-12-067.
6. PRODUCT MEETS EUROPEAN UNION DIRECTIVES AND OTHER COUNTRY REGULATIONS AS DESCRIBED IN GS-22-008.
7. THIS PRODUCT IS NOT INTENDED TO BE EXPOSED TO MANUFACTURING SOLDER PROCESSES.

DIM K MAX

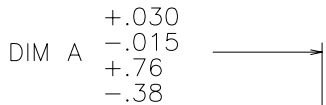
-X-

DIM L

.050  $\begin{matrix} +.005 \\ -.010 \end{matrix}$   
1.27  $\begin{matrix} +.13 \\ -.25 \end{matrix}$

.100 REF  
2.54  
PIN CENTERS WITH  
PV TERMINALS INSTALLED

.200  $\begin{matrix} +.000 \\ -.015 \end{matrix}$   
5.08  $\begin{matrix} +.00 \\ -.38 \end{matrix}$



RETENTION ROD  
P/N 65048-XXX



Copyright FCJ

mat'l. code SEE NOTE 1 & 4				surface <input checked="" type="checkbox"/>		tolerance		projection		product family PV HOUSINGS	
ltr	ec'n no	dr	date	tolerances unless otherwise specified		title		MINI ROD HOUSING DR			
A	v30801	PDP	1993-05-11	angles	linear	.XX+01/XX+3		INCH/MM		.100 [2.54] X .100 [2.54]CC	
B	v60473	MDF	1996-04-01	0°±2'		.XXX+005/XXX+13		scale 3:1		sheet 1 of 2 size	
C	v91206	BKB	1999-07-06			XXXX+0020/XXX+051				A3	
D	v03-1336	PJ	2004-01-22	dr	M. FETROW	1992-07-20				92652	
E	v05-0718	TAB	2005-07-29	engr	T. HANNA	1992-07-17				Product Customer Drawing	
F	v06-0448	HTB	2006-05-23	chr	T. HANNA	1992-07-17					
G	v07-0565	HTB	2007-08-27	appd	T. HANNA	1992-07-17					
sheet	revision	G	G								
index	sheet	1	2								

PRODUCT NO	NO. OF POSITIONS	DIM K	DIM L	RETENTION ROD P/N	RETENTION ROD LENGTH DIM A	PRODUCT NO	NO. OF POSITIONS	DIM K	DIM L	RETENTION ROD P/N	RETENTION ROD LENGTH DIM A
92652-001LF	U N A S S I G N E D					92652-026LF	52	2.600/66.04	2.500/63.50	65048-013	3.450/87.63
92652-002LF	4	.200/5.08	.100/2.54	65048-040	1.300/33.02	92652-027LF	54	2.700/68.58	2.600/66.04	65048-013	3.450/87.63
92652-003LF	6	.300/7.62	.200/5.08	65048-040	1.300/33.02	92652-028LF	56	2.800/71.12	2.700/68.58	65048-013	3.450/87.63
92652-004LF	8	.400/10.16	.300/7.62	65048-040	1.300/33.02	92652-029LF	58	2.900/73.66	2.800/71.12	65048-013	3.450/87.63
92652-005LF	10	.500/12.70	.400/10.16	65048-040	1.300/33.02	92652-030LF	60	3.000/76.20	2.900/73.66	65048-005	4.650/118.11
92652-006LF	12	.600/15.24	.500/12.70	65048-040	1.300/33.02	92652-031LF	62	3.100/78.74	3.000/76.20	65048-005	4.650/118.11
92652-007LF	14	.700/17.78	.600/15.24	65048-040	1.300/33.02	92652-032LF	64	3.200/81.28	3.100/78.74	65048-005	4.650/118.11
92652-008LF	16	.800/20.32	.700/17.78	65048-040	1.300/33.02	92652-033LF	66	3.300/83.82	3.200/81.28	65048-005	4.650/118.11
92652-009LF	18	.900/22.86	.800/20.32	65048-040	1.300/33.02	92652-034LF	68	3.400/86.36	3.300/83.82	65048-005	4.650/118.11
92652-010LF	20	1.000/25.40	.900/22.86	65048-026	2.300/58.42	92652-035LF	70	3.500/88.90	3.400/86.36	65048-005	4.650/118.11
92652-011LF	22	1.100/27.94	1.000/25.40	65048-026	2.300/58.42	92652-036LF	72	3.600/91.44	3.500/88.90	65048-005	4.650/118.11
92652-012LF	24	1.200/30.48	1.100/27.94	65048-026	2.300/58.42						
92652-013LF	26	1.300/33.02	1.200/30.48	65048-026	2.300/58.42						
92652-014LF	28	1.400/35.58	1.300/33.02	65048-026	2.300/58.42						
92652-015LF	30	1.500/38.10	1.400/35.56	65048-026	2.300/58.42						
92652-016LF	32	1.600/40.64	1.500/38.10	65048-026	2.300/58.42						
92652-017LF	34	1.700/43.18	1.600/40.64	65048-026	2.300/58.42						
92652-018LF	36	1.800/45.72	1.700/43.18	65048-026	2.300/58.42						
92652-019LF	38	1.900/48.26	1.800/45.72	65048-026	2.300/58.42						
92652-020LF	40	2.000/50.80	1.900/48.26	65048-013	3.450/87.63						
92652-021LF	42	2.100/53.34	2.000/50.80	65048-013	3.450/87.63						
92652-022LF	44	2.200/55.88	2.100/53.34	65048-013	3.450/87.63						
92652-023LF	46	2.300/58.42	2.200/55.88	65048-013	3.450/87.63						
92652-024LF	48	2.400/60.96	2.300/58.42	65048-013	3.450/87.63						
92652-025LF	50	2.500/63.50	2.400/60.96	65048-013	3.450/87.63						



FCconnect.com

Copyright FCJ

mat'l. code SEE NOTE 1 & 4		surface <input checked="" type="checkbox"/>	tolerance	projection 	product family PV HOUSINGS
ltr	ecn no	dr	date	tolerances unless otherwise specified	title
G				angles linear XX+01/XX+3 XXX+005/XXX+13 XXXX+0020/XXX+051	MINI ROD HOUSING DR .100 [2.54] X .100 [2.54]CC
				0'±2'	scale 1:1
		dr	M. FETROW	1992-07-20	dwg no 92652
		enr	T. HANNA	1992-07-17	sheet 2 of 2
		chr	T. HANNA	1992-07-17	size A3
		appd	T. HANNA	1992-07-17	type Product Customer Drawing
sheet index	revision sheet				