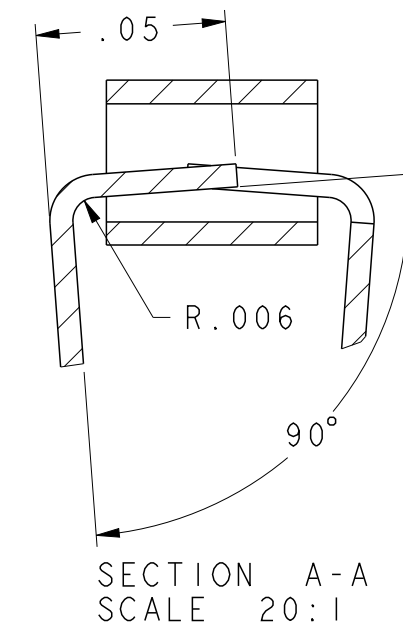
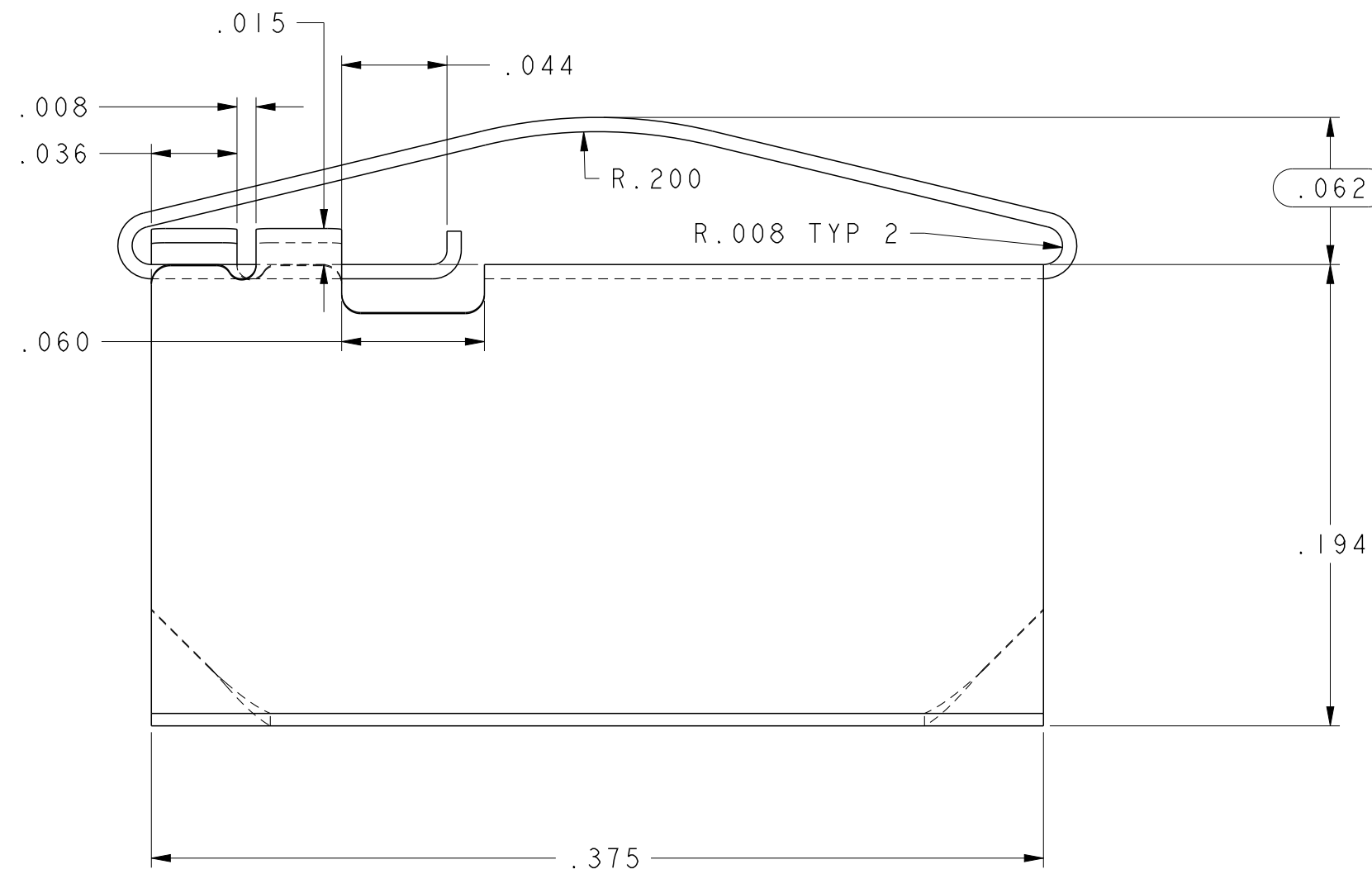
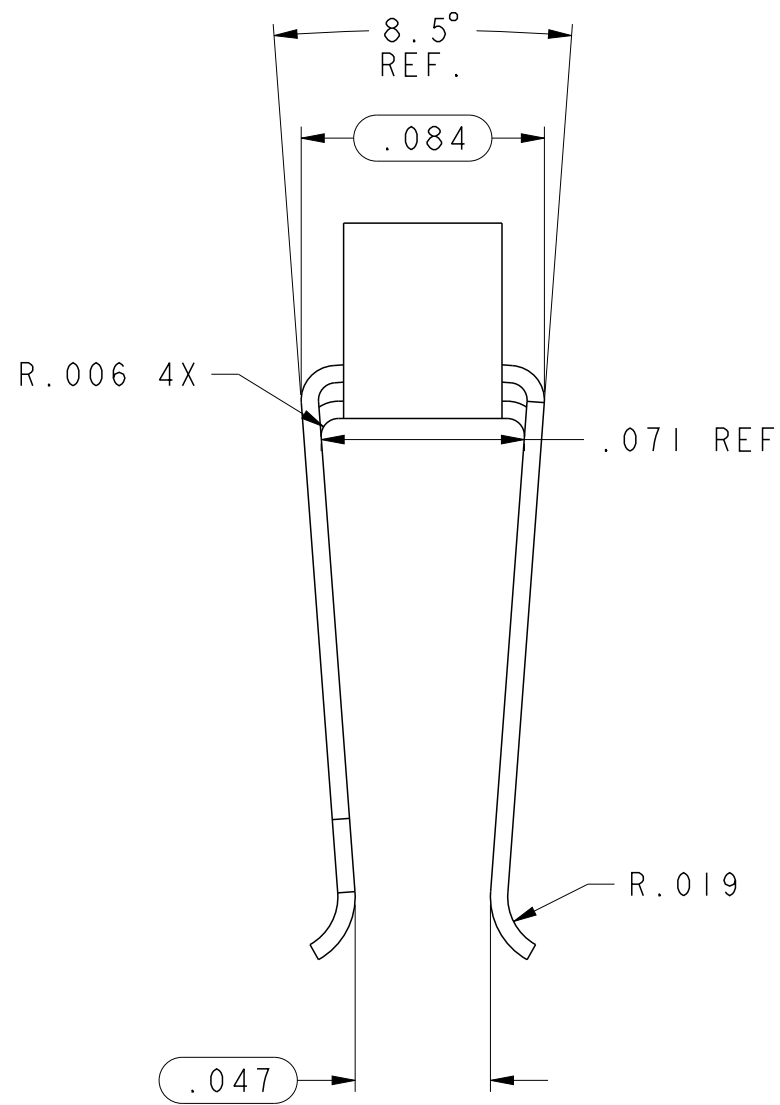
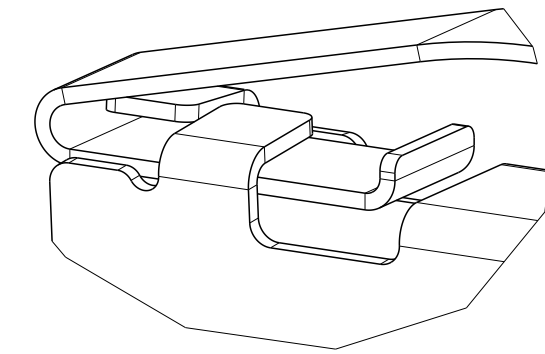
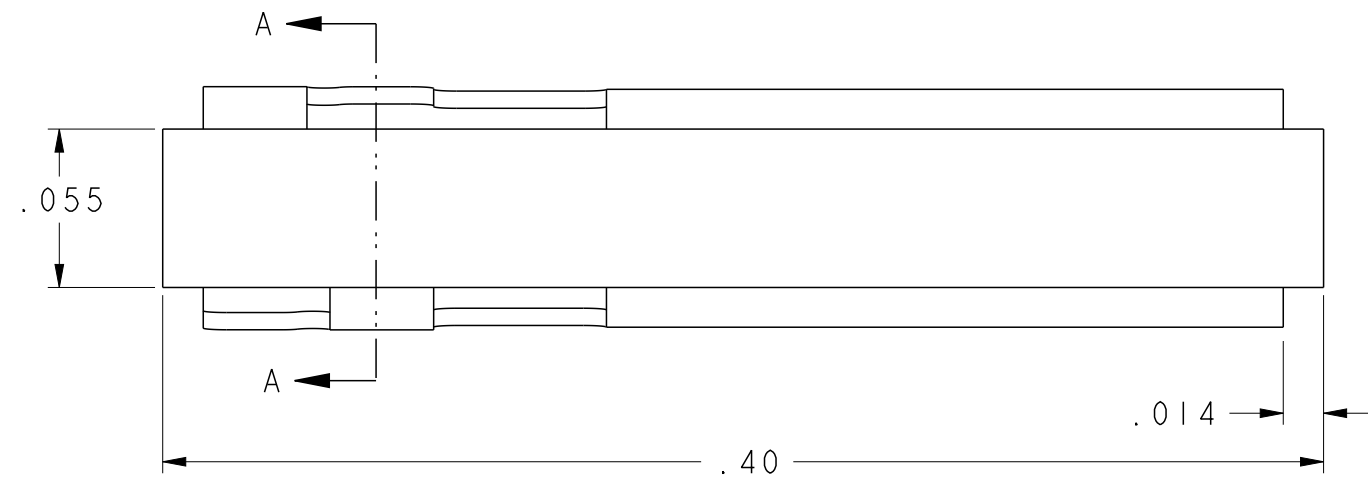
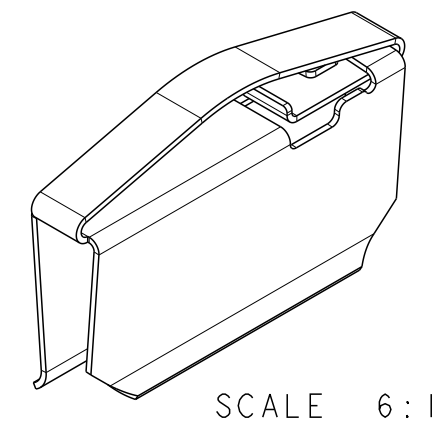
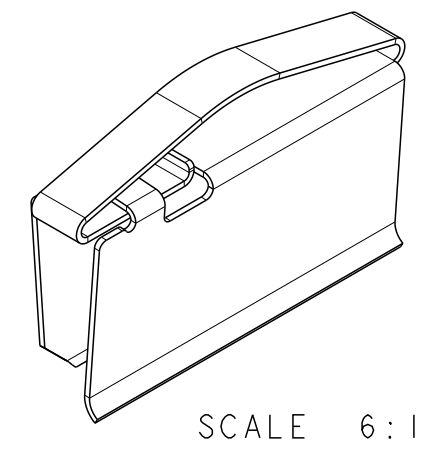
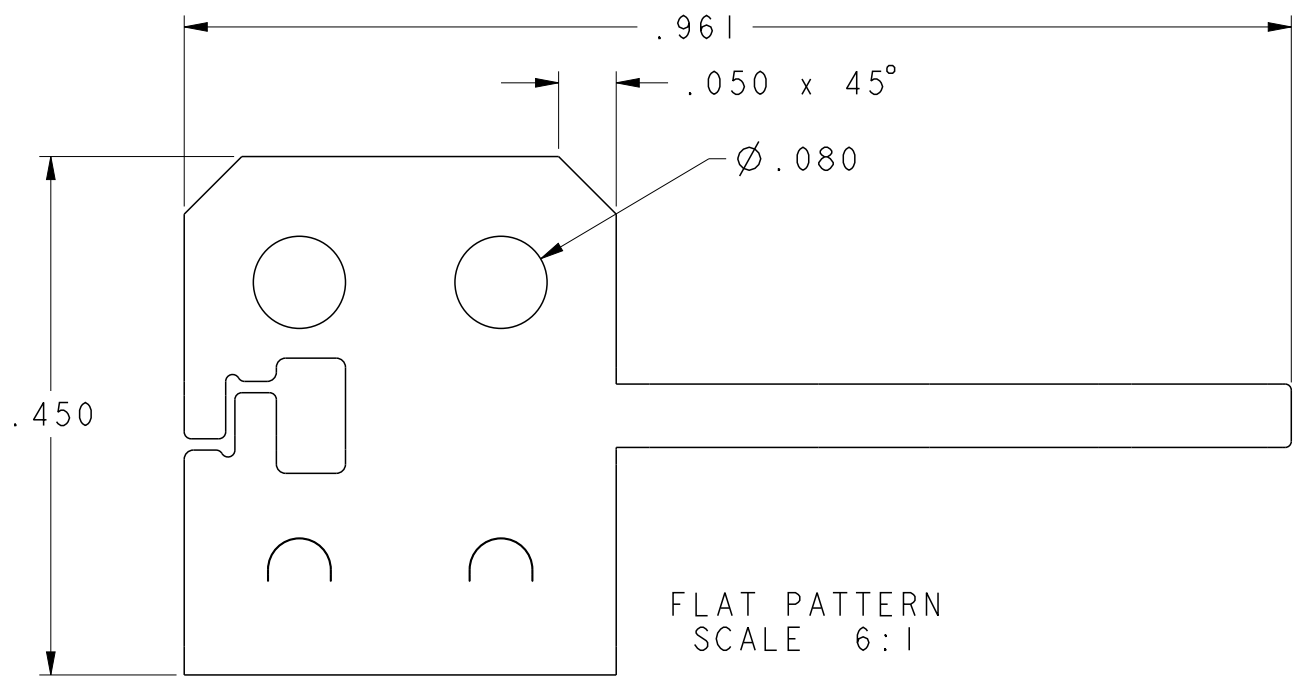


DWG NO:	0097-0983	
REVISIONS		
MOVED "D" LANCES DOWN .020" MS 07-13-00		02
ECO-E2719 UPDATED DRAWING PER WHS DRAWING. FAK 02-05-02 EWS 02-05-02		03
ECO# AZ111352 DG 4-01-11 .084 WAS .080, .048 WAS .050, .450 WAS .447, INSPECTION NOTE		04



NOTE:
CIRCLED DIMENSIONS ARE CRITICAL TO FUNCTION AND FIT.
IN PROCESS INSPECTION IS REQUIRED FOR THESE DIMENSIONS.

APPROVED
By Dan Green at 6:15 pm, Apr 01, 2011

MATERIAL: .006 ±.0002 x .?? ±.00? ALLOY 25 BECU 1/4H (TD01)	TOLERANCES NOT SHOWN DECIMAL 2 PL'S ± .01 DECIMAL 3 PL'S ± .005
HEAT TREAT: TO DPH 353 MIN USING A 500 GRAM LOAD	ANGULAR ± 3°
THICKNESS AFTER: X X	THIRD ANGLE PROJECTION
FINISH: BRIGHT TIN PER MIL-T-10727 .0002" ± .0001"	UNITS: INCH SCALE: [MM] 15:1
CAD MAINTAINED DRAWING. MANUAL CHANGES UNAUTHORIZED.	

DRAWN BY: PVH DATE: 06/22/99	
CHECKED: LP DATE: 07/19/99	
APPROVED: PVH DATE: 07/19/99	
CARD GUIDE CLIP-ON	
REF. DWG. NO.	DWG. NO. 0097-0983
	SHEET 1 OF 1
	REV 04

