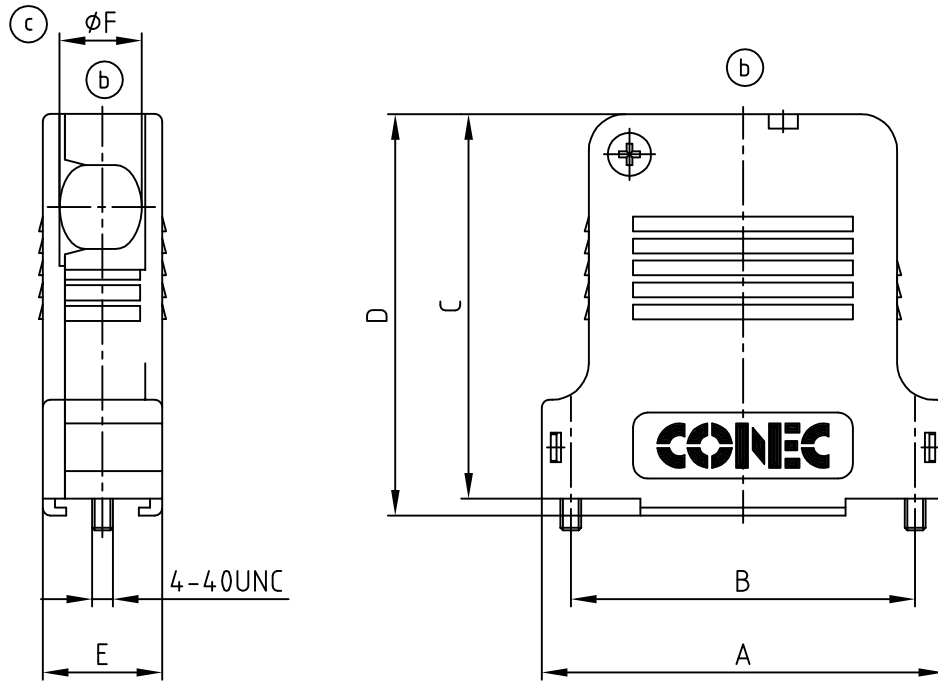


used for: D-SUB



(b) HOOD ASSEMBLY CONSISTS OF:

- 1 x HOOD + COVER: PBT UL 94 V-0; BLACK
- 1 x PRESS INSERT: PBT UL 94 V-0; BLACK
- 2 x JACKSCREWS: BRASS; NICKEL PLATED
- 2 x SCREW FOR STRAIN RELIEF: STEEL; ZINC PLATED
- 1 x COVER SCREWS: STEEL; NICKEL PLATED
- 1 x STRAIN RELIEF: STEEL; NICKEL PLATED

TECHNICAL DATA:

- TEMPERATURE RANGE: -33°C to +90°C

Pos.	A	B	C	D	E	ϕF cable diameter		PART NO.
						WITH PRESS INSERT	WITHOUT PRESS INSERT	
9	32.9	25.0	39.5	41.8	16.3	4.0 - 6.3	6.4 - 8.6	165X13419X
15	41.2	33.3	45.5	47.8	16.3	4.0 - 6.3	6.4 - 8.6	165X13429X
25	54.9	47.0	52.5	54.8	16.3	6.5 - 8.5	8.6 - 12.0	165X13439X
37	71.4	63.5	55.0	57.8	18.7	8.5 - 10.9	11.0 - 14.0	165X13449X
50	69.0	61.1	55.0	57.8	19.5	8.5 - 10.9	11.0 - 14.0	165X13459X

Directive 2002/95/EC RoHS compliant

THIS DRAWING MAY NOT BE COPIED OR REPRODUCED IN ANY WAY, AND MAY NOT BE PASSED ON TO A THIRD PARTY WITHOUT WRITTEN PERMISSION.
 OWNERSHIP AND COPYRIGHT OF CONEC GmbH
 DO NOT ALTER CAD DRAWING BY HAND

tolerance		scale: 1:1	
2000	date	material: SEE TECHNICAL DATA	
drawn	26.06.	title: PLASTIC HOOD WITH SIDE CABLE EXIT 9 to 50pos.	
appd.	26.06.	name: A. Mickenbecker	
norm		dwg no: AutoCAD 2000	
d-old		DIN-A 4	
2 x c	Ä 3644	12.05.2010	Petker
3 x b	Ä 2196	04.04.2005	Lehmen
rev.	description	date	name



title: PLASTIC HOOD WITH SIDE CABLE EXIT 9 to 50pos.
 dwg no: AutoCAD 2000
 16K1A009A
 product no: SEE TABLE
 DIN-A 4
 sh: 1/1