

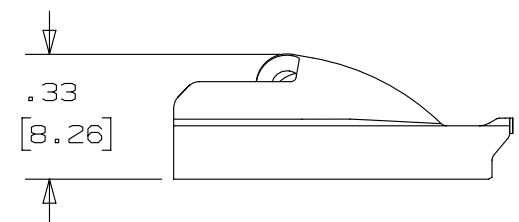
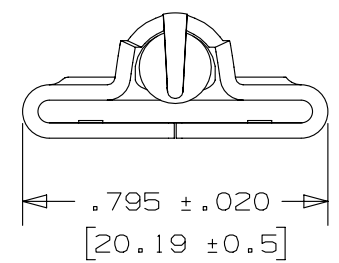
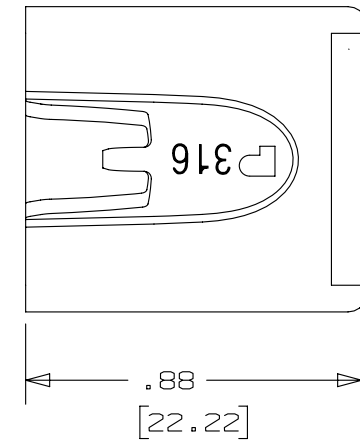
2

1

THIS COPY IS PROVIDED ON A RESTRICTED BASIS AND IS NOT TO BE USED IN ANY WAY DETRIMENTAL TO THE INTERESTS OF PANDUIT CORP.

NOTES:

1. TO BE USED WITH PANDUIT METAL BANDING MBCSH-QR316
2. INSTALLATION TOOLS: RT2HT, PBTMT, RT2HTN
3. BRACKETS [ ] DENOTES DIMENSIONS IN MILLIMETERS
4. MINIMUM LOOP TENSILE STRENGTH: 450 LBS (2002N)
5. TOLERANCES:
  - .X = ±.030 [ .762 ]
  - .XX = ±.020 [ .508 ]
  - .XXX = ±.010 [ .254 ]
  - ANGLES = ±2°
6. MATERIAL: 316 STAINLESS STEEL



REV	DATE	BY	CHK	APR	DESCRIPTION	ECN
02A	4/13	JAMB	MIM	RGRO	UPDATE DRAWING TO NEW GLOBAL PANDUIT TITLE BLOCK WITH PANDUIT LOGO	SSECN01049
01A	7/11	JAMB	EJD	---	REMOVED INSTALLATION TOOL RT1HT. ADDED INSTALLATION TOOLS RT2HT,PBTMT & RT2HTN	-----
00	8/05	JAMB	EJD	---	DRAWING RELEASED	SS00030

TITLE <b>METAL LOCKING TIE HEAD – SUPER HEAVY DUTY – FOR FULLY COATED BANDING PART NUMBER MTHCSH-C316</b> CUSTOMER DRAWING					
ITEM REVISION NAME N41198BS/02					
DATASET FILE NAME N41198BS_DC/02A					
UNLESS OTHERWISE SPECIFIED, DIMENSIONAL TOLERANCES ARE: IN [ mm ] .x ± .1 [ 2.54 ]      .xxx ± .005 [ .127 ] .xx ± .01 [ .25 ]      ANGLES ± 5 °			MATERIAL: SEE NOTES		
THIRD ANGLE PROJECTION			DRAWING NUMBER: N41198BS_DC		
DRAWN BY JAMB	DATE 8/23/05	CHK EJD	SCALE 2:1	SHT 1 OF 1	
					SIZE A

2

1