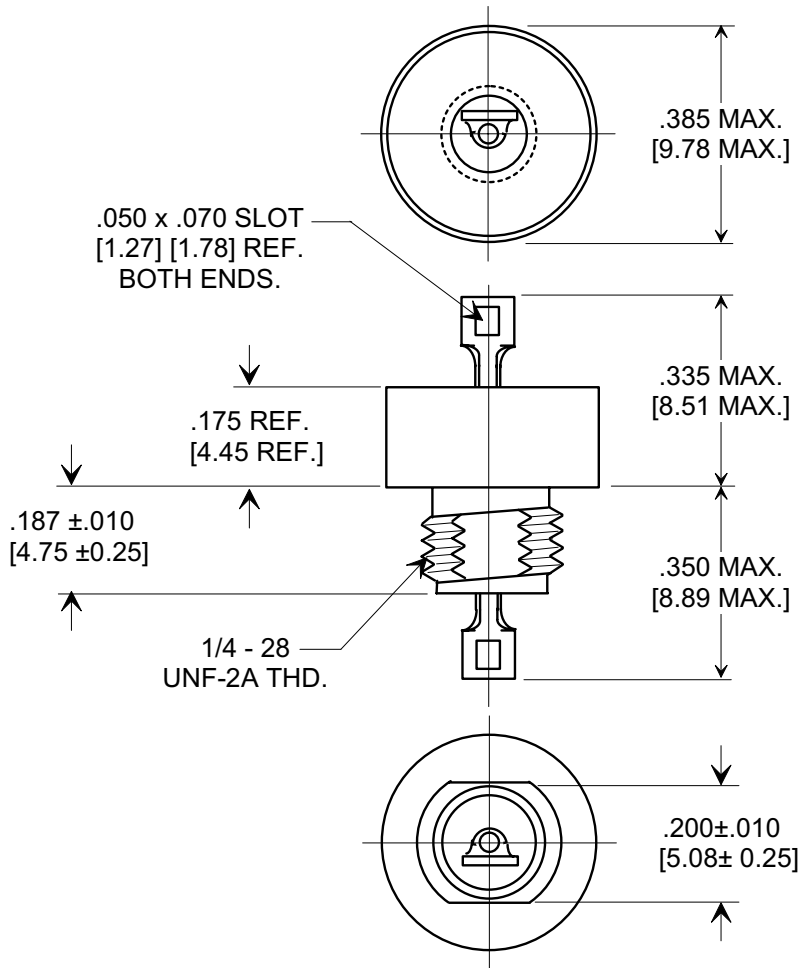
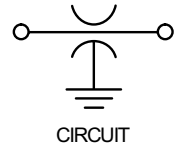
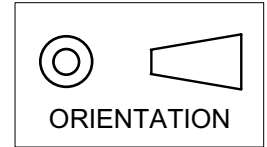


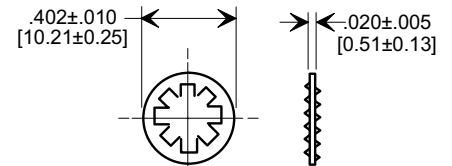
MARKETING SALES DRAWING

DIMENSIONS IN INCHES - DO NOT SCALE THIS DRAWING
DIMENSIONS IN METRIC - []

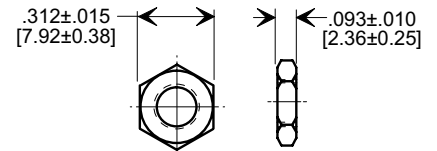
Electrical Testing
 per Tusonix standard
 test plans and Mil-Std-202
 Test Methods.



MOUNTING HARDWARE



LOCK WASHER



HEX NUT

NOTES:

- MATERIALS:
 BUSHING - TIN PLATED STEEL
 LEAD - SOLDER PLATED COPPER
 NUT - TIN PLATED BRASS
 L'WASHER - TIN PLATED PHOSPHOR BRONZE
- MOUNTING TORQUE: 8 lb - ins. max
 SEAL TESTED PER MIL-STD-202
 METHOD 112 CONDITION A.
- DCR - .01Ω max.
- MAX. SOLDER TEMPERATURE 500°F

| MIN. CAP. (μF) | WORKING VOLTAGE DC | | CURRENT | IR (MIN.) @ 100 VDC | DWW | MINIMUM NO LOAD INSERTION LOSS (dB) AT 25°C PER MIL-STD-220 | | | | | |
|----------------|--------------------|--------|---------|---------------------|---------|---|---------|---------|-------|--------|-------|
| | +85°C | +125°C | | | | 30 KHz | 100 KHz | 300 KHz | 1 MHz | 10 MHz | 1 GHz |
| 1.4 | 100 | 70 | 15 A | 500 M Ω | 300 VDC | 15 | 25 | 34 | 44 | 60 | 70 |

| | | |
|--|---|---|
| X-2015 Rev-0 REVISION RECORD | 0 | Original Release C.O. 6769 |
| | 1 | METRIC DIM'S & NOTES ADDED. E.C. 7-17-92 |
| | 2 | 6789 WVDC REVISED 100 & 70 WERE 80 & 50. L.E. 10-26-92 |
| | 3 | 6992 RDN TO COMP FMP. STYLE DWG SPLIT FOR EACH VAR. S.M. 06-19-02 |
| 4 | 20020604-3-07 NOTE 1 LEAD WAS SILVER. S.M. 02-02-04 | |
| 5 | 20040202-2-01 | |
| --TOLERANCES-- Unless Otherwise Specified | | Title " C " TYPE COAXIAL BROADBAND FILTER - HERMETICALLY SEALED |
| DECIMAL ± // // | | |
| ANGLES ± // // | | Drawn S.M. 06-19-02 Scale X 3 |
| TUSONIX TUCSON, ARIZONA | | Approved J.Mc 06-19-02 |
| A | | 4601-000 |